

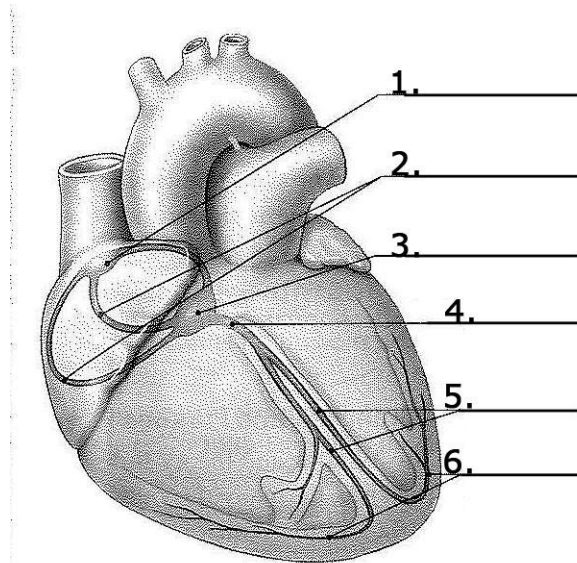
The worksheet below is adapted from

- A. Fundamentals of Anatomy and Physiology (9th Ed) by Martin et al
- B. Human Anatomy and Physiology Lab Manual (9th Ed) by Marieb and Mitchell

1. What are the 2 types of cardiac muscle cells involved in a normal heartbeat?

2. What does the term 'autorhythmicity'?

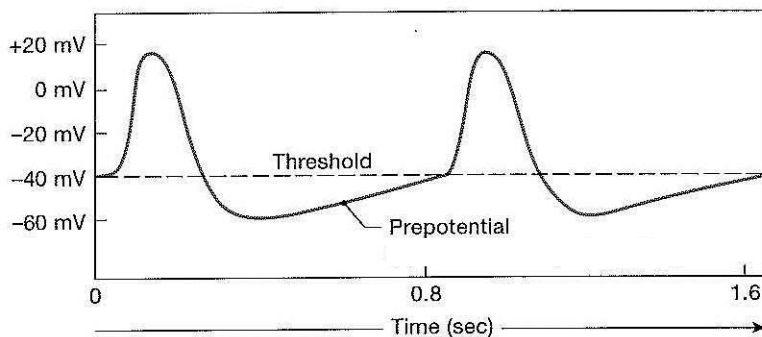
3. Match the terms on the left with the numbers in the figure for the components of the conducting system in the heart.



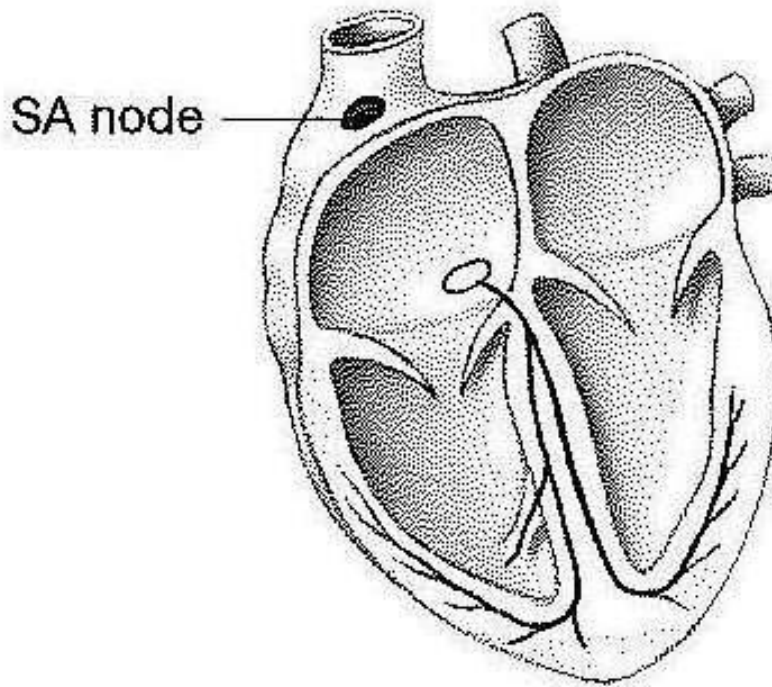
- a. Bundle branches
- b. Internodal pathways
- c. Atrioventricular (AV) bundle
- d. Sinoatrial (SA) node
- e. Purkinje fibers
- f. AV bundle (bundle of His)

a Components of the conducting system.

4. Referring to the graph below, describe the pacemaker potential.

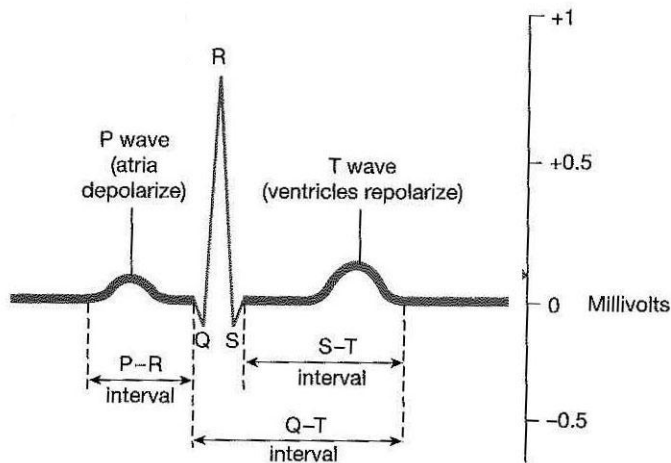


5. Describe the pathway for impulse conduction through the heart; you may use the diagram below to indicate the pathway.



6. What is an electrocardiogram (ECG or EKG)?

7. Describe the events depicted on the cardiogram:



8. Describe the phases of the Cardiac Cycle.