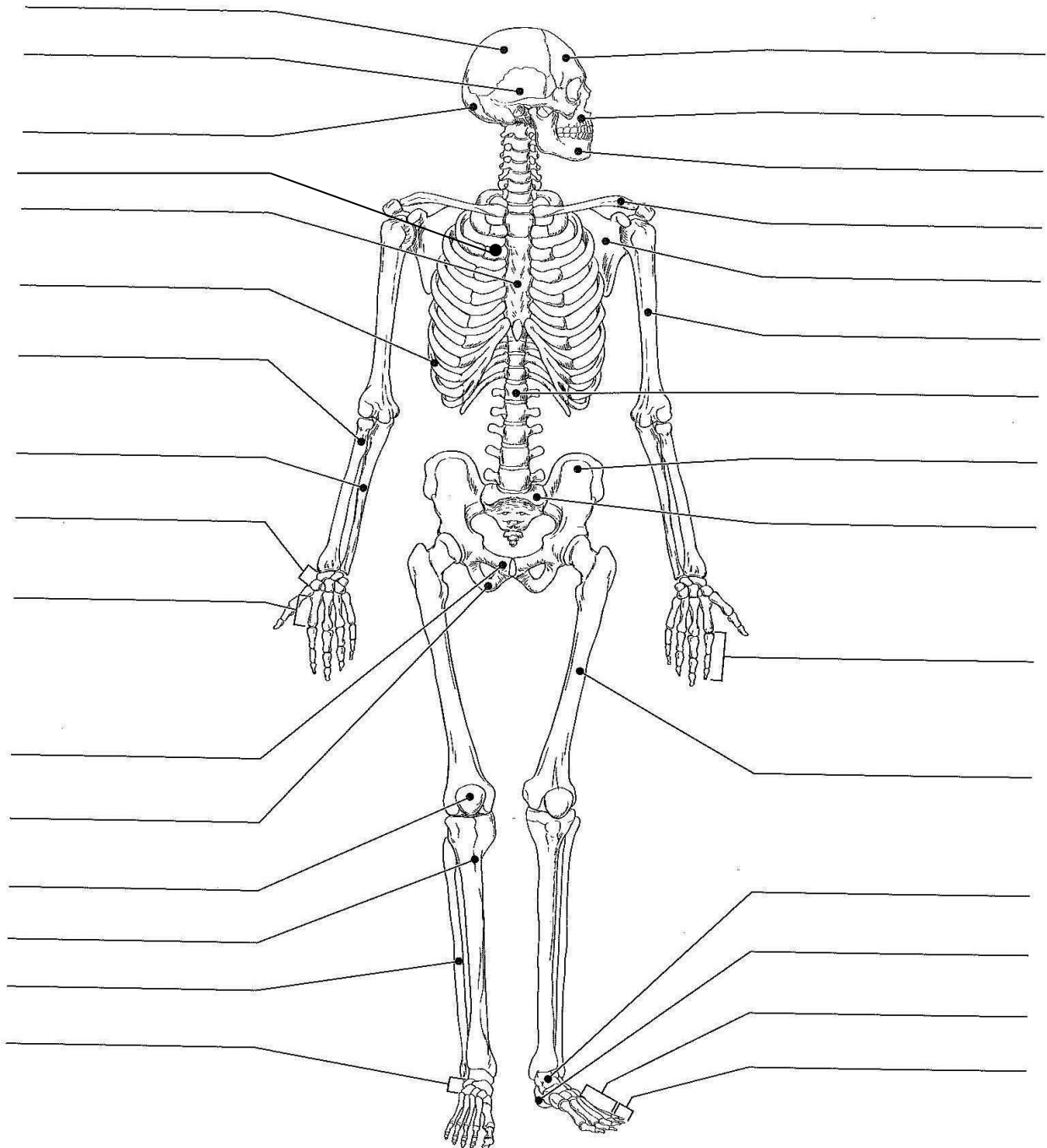


The worksheet below is adapted from

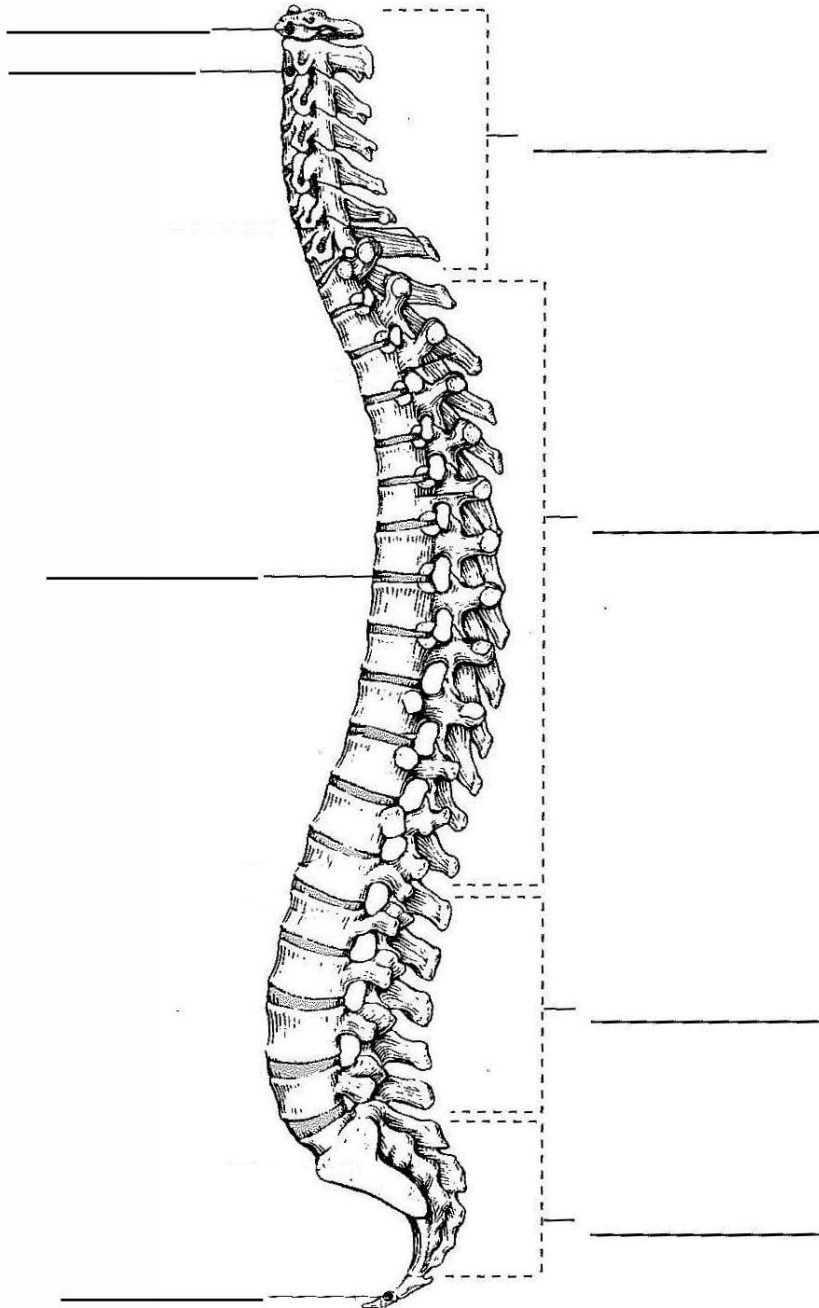
- A. Fundamentals of Anatomy and Physiology (9th Ed) by Martin et al
- B. Human Anatomy and Physiology Lab Manual (9th Ed) by Marieb and Mitchell

1. Name the 2 divisions of the skeleton and the bones they encompass
2. Fill in the blanks:

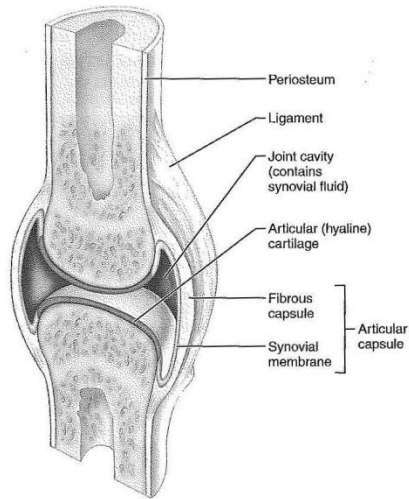


3. What are the 5 main functions of the skeleton?

4. Fill in the blanks:



5. Synovial joints are those that generally freely moveable, such joint are also termed diarthrotic. These are joints in which the articulating bone ends are separated by a joint cavity containing synovial fluid:



General structure of a Synovial Joint

Briefly describe the 6 kinds of synovial joints and give an example of where each is found.

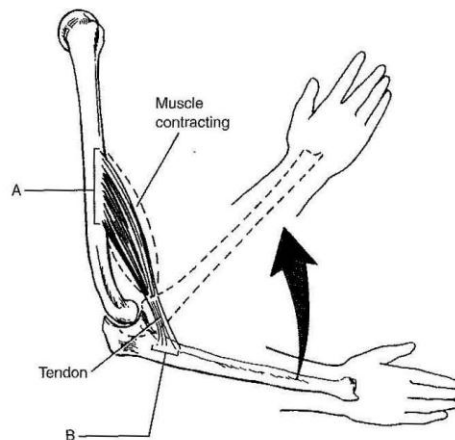
6. Fill in the blanks:

Movements Allowed by Synovial Joints

10. Which letter of the adjacent diagram marks the origin of the muscle? _____ Which letter marks the insertion? _____

Insert the words *origin* and *insertion* into the following sentence:

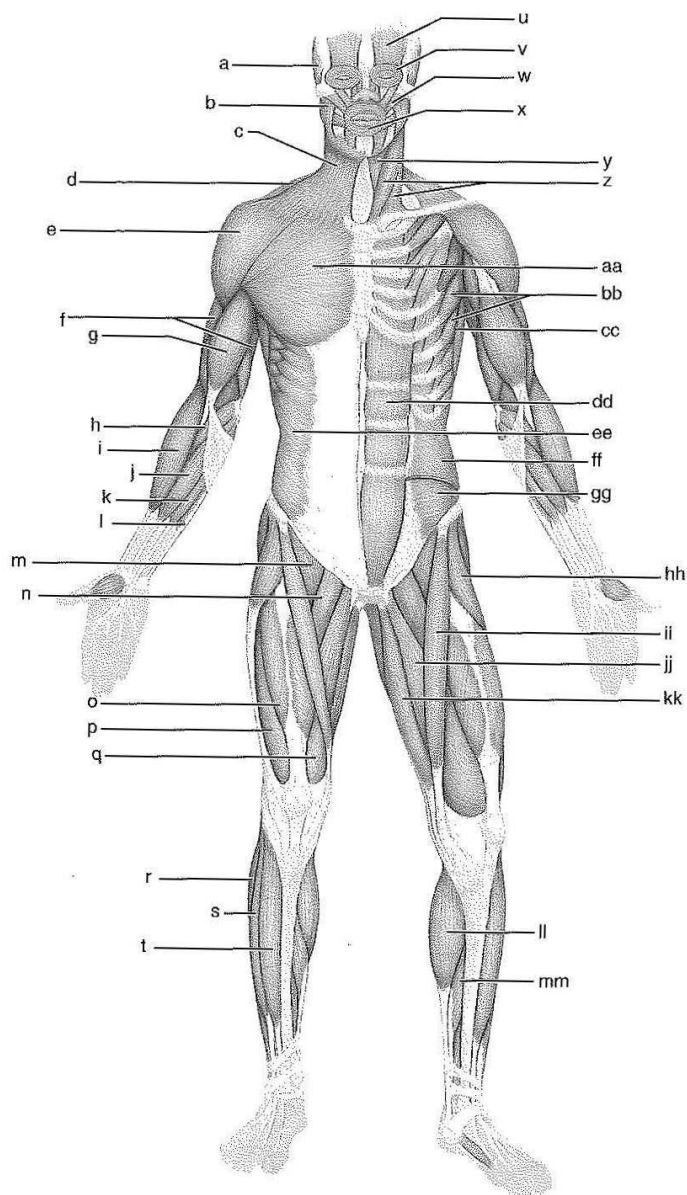
During muscle contraction, the _____ moves toward the _____.



7.

Identify the lettered muscles in the diagram of the human anterior superficial musculature by matching its letter with one of the following muscle names:

- _____ 1. adductor longus
- _____ 2. biceps brachii
- _____ 3. brachioradialis
- _____ 4. deltoid
- _____ 5. extensor digitorum longus
- _____ 6. external oblique
- _____ 7. fibularis longus
- _____ 8. flexor carpi radialis
- _____ 9. flexor carpi ulnaris
- _____ 10. frontalis
- _____ 11. gastrocnemius
- _____ 12. gracilis
- _____ 13. iliopsoas
- _____ 14. internal oblique
- _____ 15. latissimus dorsi
- _____ 16. masseter
- _____ 17. orbicularis oculi
- _____ 18. orbicularis oris
- _____ 19. palmaris longus
- _____ 20. pectineus
- _____ 21. pectoralis major
- _____ 22. platysma
- _____ 23. rectus abdominis
- _____ 24. rectus abdominis
- _____ 25. rectus femoris
- _____ 26. sartorius
- _____ 27. serratus anterior
- _____ 28. soleus
- _____ 29. sternocleidomastoid
- _____ 30. sternohyoid



- _____ 31. temporalis
- _____ 32. tensor fasciae latae
- _____ 33. tibialis anterior
- _____ 34. transversus abdominis
- _____ 35. trapezius
- _____ 36. triceps brachii

Identify each of the lettered muscles in this diagram of the human posterior superficial musculature by matching its letter to one of the following muscle names:

- _____ 1. adductor magnus
- _____ 2. biceps femoris
- _____ 3. brachialis
- _____ 4. brachioradialis
- _____ 5. deltoid
- _____ 6. extensor carpi radialis longus
- _____ 7. extensor carpi ulnaris
- _____ 8. extensor digitorum
- _____ 9. external oblique
- _____ 10. flexor carpi ulnaris
- _____ 11. gastrocnemius
- _____ 12. gluteus maximus
- _____ 13. gluteus medius
- _____ 14. gracilis

- _____ 16. infraspinatus
- _____ 17. latissimus dorsi
- _____ 18. occipitalis
- _____ 19. semimembranosus
- _____ 20. semitendinosus
- _____ 21. sternocleidomastoid
- _____ 22. teres major
- _____ 23. trapezius
- _____ 24. triceps brachii

