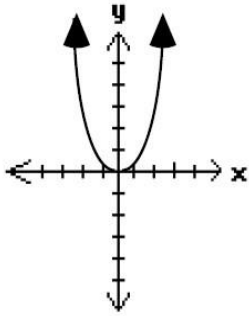
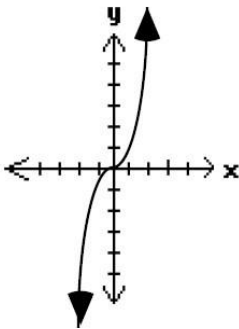


General Graph Forms, Translations and Reflections

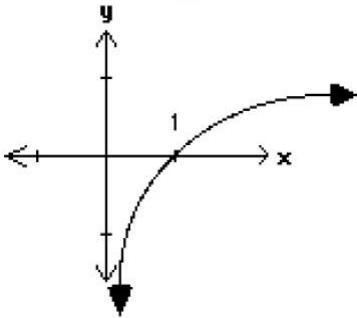
$$y = x^{(\text{even})}$$



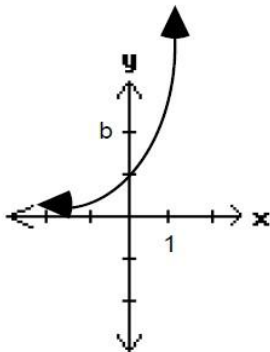
$$y = x^{(\text{odd})}$$



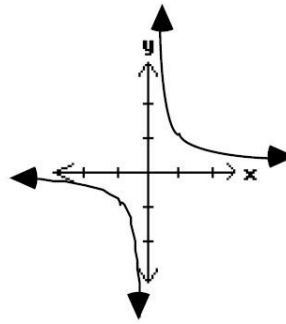
$$y = \log_b x, (b > 1)$$



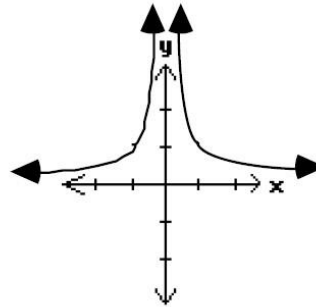
$$y = b^x, (b > 1)$$



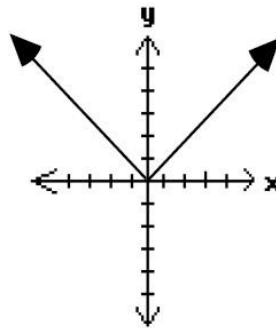
$$y = \frac{1}{x^{(\text{odd})}}$$



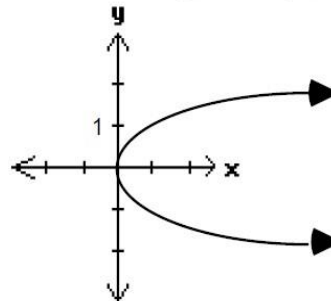
$$y = \frac{1}{x^{(\text{even})}}$$



$$y = |x|$$

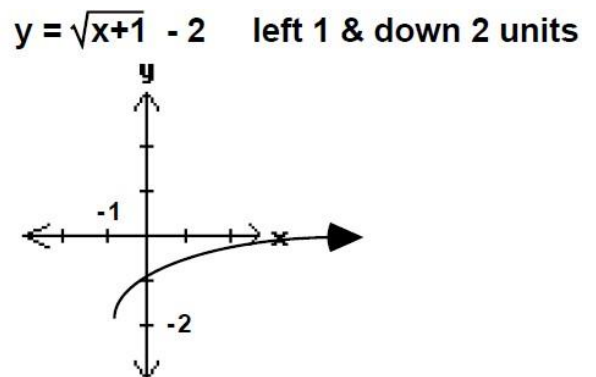
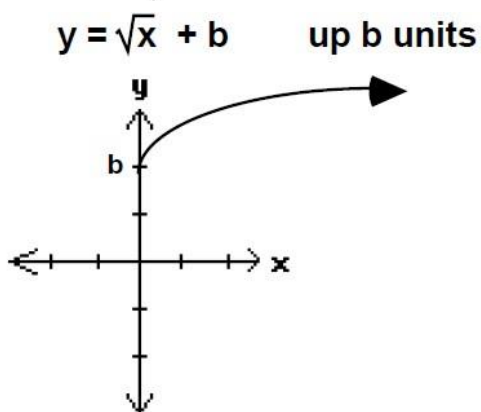
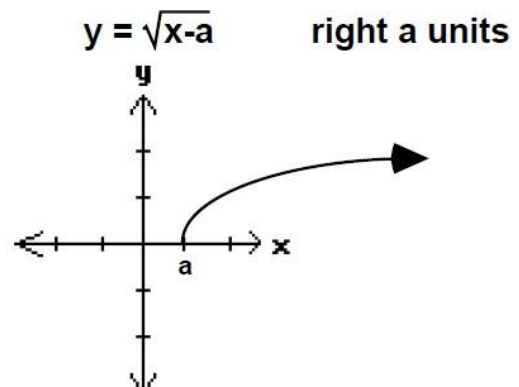
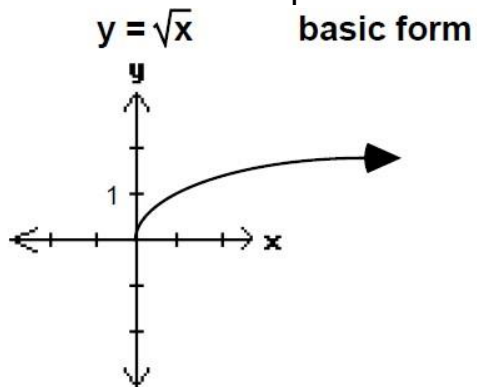


$$y = \pm\sqrt{x}$$



See Back for Examples using transformations and reflections

A Specific Example with Translations



A Specific Example with Reflections

