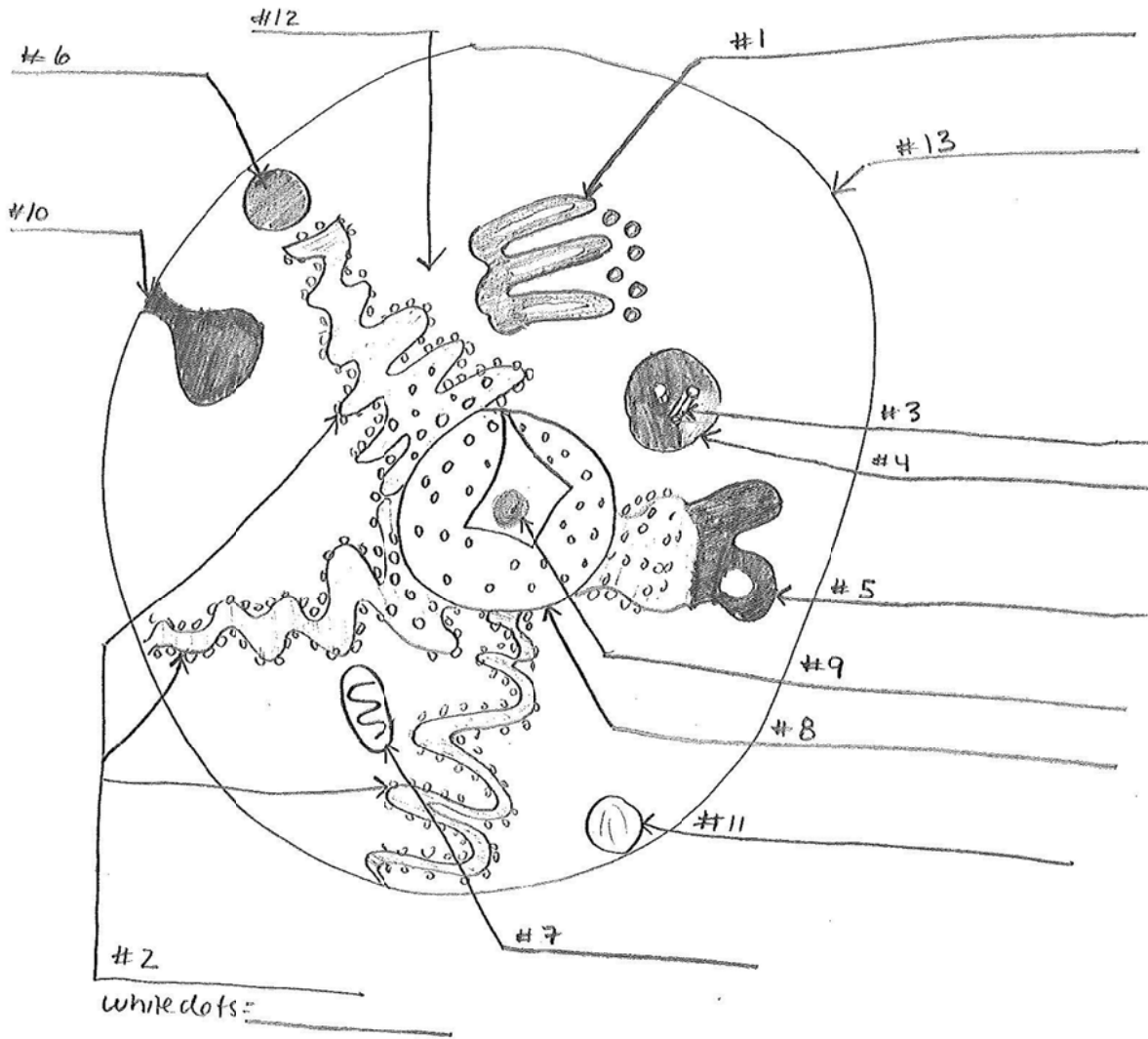


Part I: Practice labeling the animal cell model. Go to the website to view a picture in color. Answers are located on the next page.



Part II: List 1 function of each structure identified above. (There are many, but list only 1 function.)

- | | | |
|----|-----|-----|
| 1. | 6. | 11. |
| 2. | 7. | 12. |
| 3. | 8. | 13. |
| 4. | 9. | |
| 5. | 10. | |



Answer Key

Part I

1. Golgi Body (Apparatus)
2. Rough Endoplasmic Reticulum with Ribosomes (white dots)
3. Centrioles
4. Centrosome
5. Smooth Endoplasmic Reticulum
6. Peroxisome
7. Mitochondria
8. Nuclear Membrane around the Nucleus
9. Nucleolus
10. Secretory Vesicle
11. Lysosome
12. Cytosol or Cytoplasm
13. Cell Membrane

Answer Key

Part II

Since there are numerous functions for each structure, answers will vary.

1. Cell products are packaged into vesicles
2. Proteins are synthesized by Ribosomes in the Rough endoplasmic Reticulum
3. Produces spindle fibers during cell division
4. Holds the Centrioles
5. Synthesizes cholesterol and lipids
6. Breaks down fatty acids
7. Produce ATP (energy)
8. Surrounds nucleus and has pores
9. Stores DNA, produces rRNA
10. Secretes materials from the cell
11. Digest old cell components
12. Gel-like substance that fills the cell
13. Separates intracellular materials from extracellular materials or protects the cell