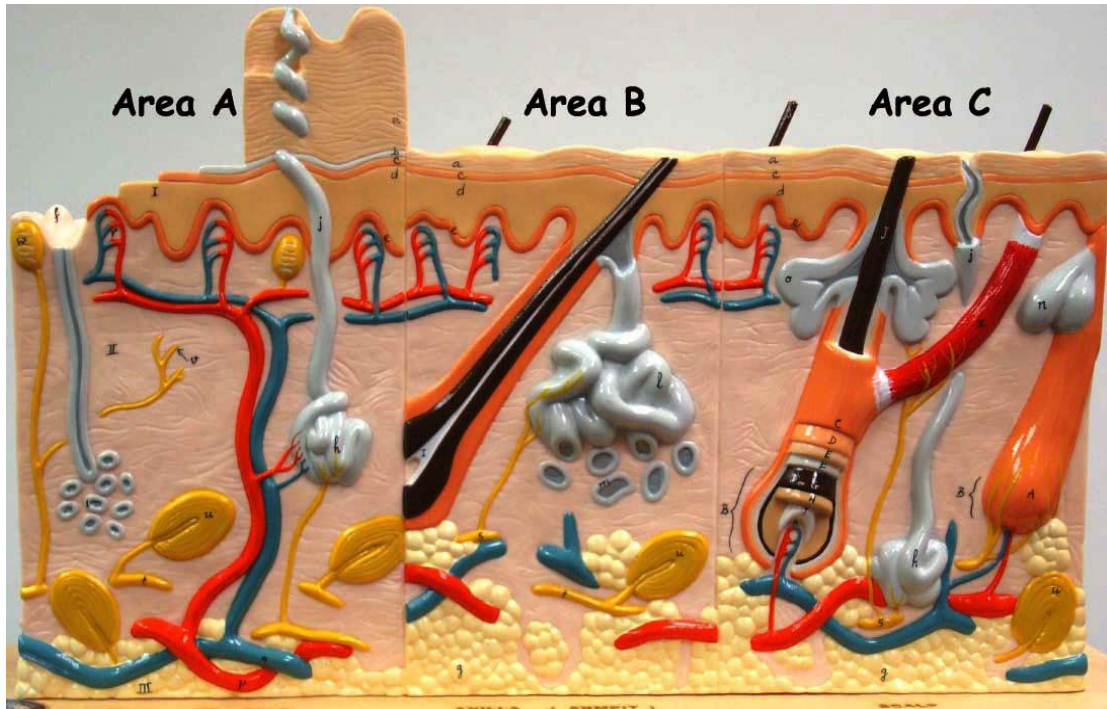


## Layers of the Skin-key



### I. Epidermis

- a. Stratum corneum
- b. Stratum lucidum
- c. Stratum granulosum
- d. Stratum spinosum
- e. Stratum basale (germinativum)

### II. Dermis

- f. Dermal papillae
- Not labeled: Dermal Papillary layer and Dermal reticular layer

### III. Hypodermis

- g. Fatty tissue

### IV. Hair

- A. Hair follicle
- B. Hair root

J. Hair shaft

### V. Glands

- h&l. Eccrine sweat gland
- k. Sweat gland pore
- l&m. Apocrine gland
- n&o Sebaceous gland

### VI. Nervous tissue

- u. Pacinian corpuscle
- w. Meissner's corpuscle

### VII. Muscle

- x. Arrector pili muscle