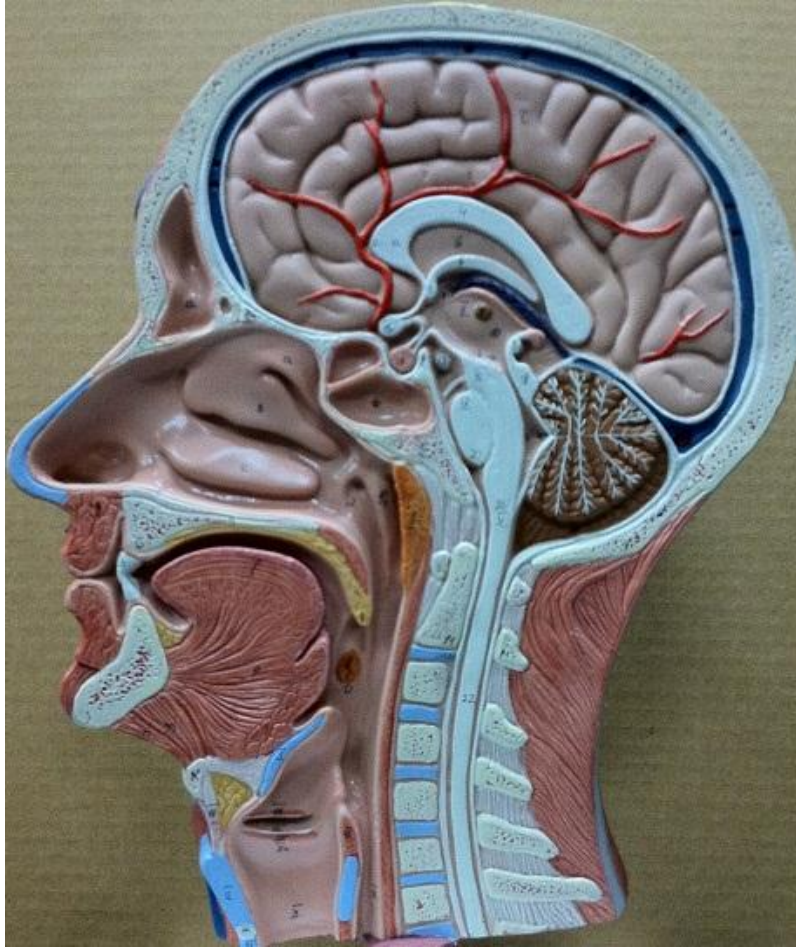


Half-Head Model Key: Nervous System



- | | |
|---|--------------------------|
| 1. Cerebrum | 17. Mammillary Body |
| 1. Superior Sagittal Sinus | 18. Corpora Quadrigemina |
| 3. Cerebellum, entire (white "trees" are arbor vitae) | 20. Pons |
| 4. Corpus Callosum | 21. Medulla Oblongata |
| 5. Septum Pellucidum | 22. Spinal Cord |
| 6. Fornix | |
| 7. Anterior Commissure | |
| 8. Interthalamic Adhesion | |
| 10, II. Thalamus | |
| 11. Choroid Plexus | |
| 12. Cerebral Aqueduct (a.k.a. Aqueduct of midbrain) | |
| 13. Fourth Ventricle | |
| 14. Pineal Gland (a.k.a. Pineal body) | |
| 15. Optic Chiasm | |
| 16. Pituitary Gland (stalk is the infundibulum) | |