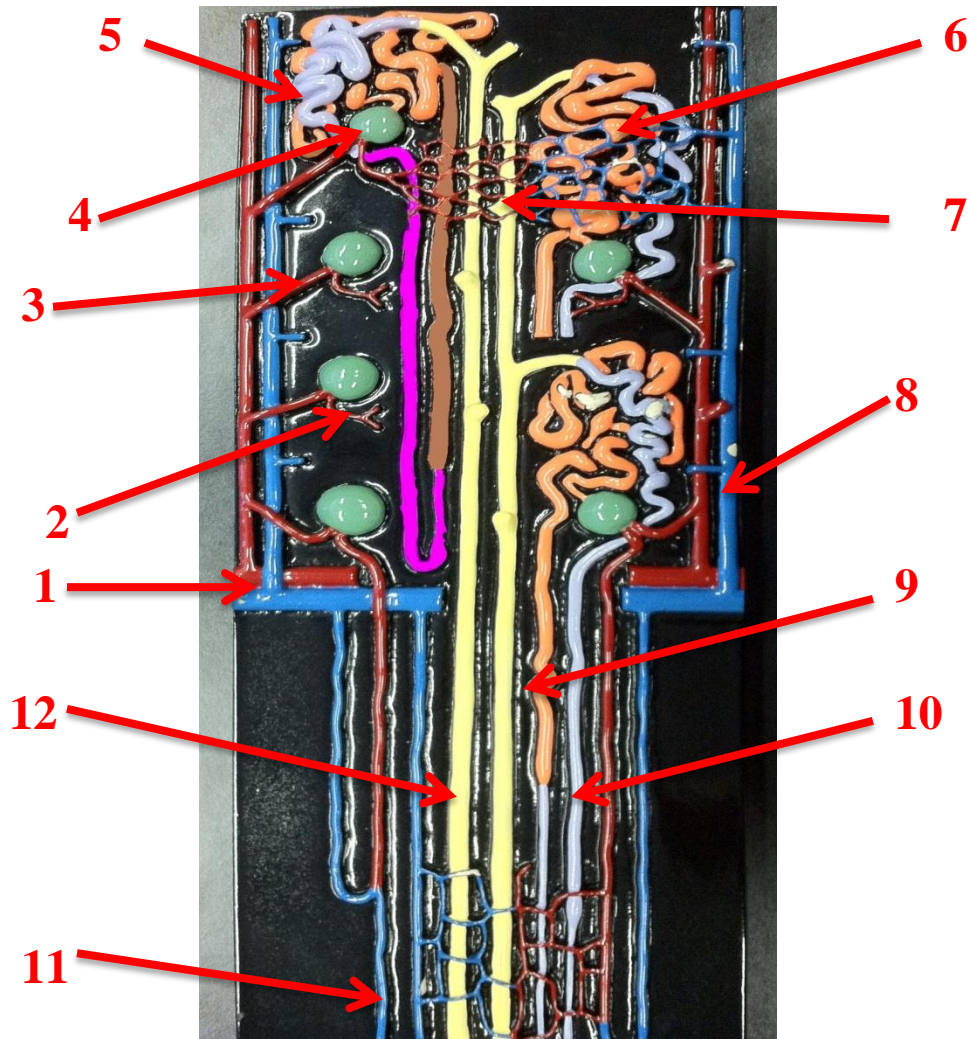


For the audio version of the file, click this link: [ID - Nephron Model Audio](#)

## Colored Nephron Model KEY



- |   |                     |
|---|---------------------|
| 1. Arcuate artery and vein                      | 11. Vasa Recta      |
| 2. Efferent arteriole                           | 12. Collecting Duct |
| 3. Afferent arteriole                           |                     |
| 4. Renal corpuscle (Glomerulus + Renal capsule) |                     |
| 5. Distal convoluted tubule                     |                     |
| 6. Proximal convoluted tubule                   |                     |
| 7. Peritubular capillaries                      |                     |
| 8. Interlobular arteries and veins              |                     |
| 9. Henle's loop descending limb                 |                     |
| 10. Henle's loop ascending limb                 |                     |