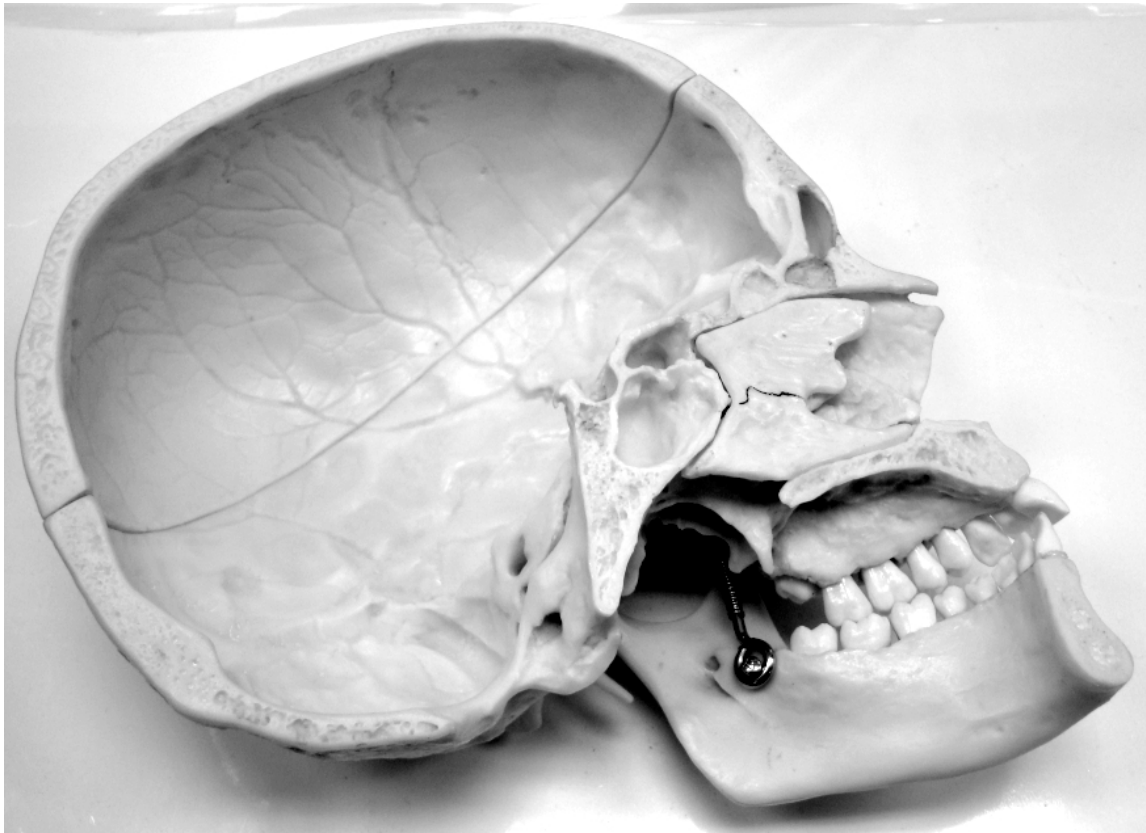


For the audio version of the file, click this link: [ID - Midsagittal Skull Audio](#)



**What you need to ID sheet – Plastic “Pop Top Skull” Model**

This sheet tells you what you need to be able to identify on this model – check the “to know” sheet for anything else you may need to know about this topic.

You are **done** with this model when you can identify **all** of the following structures:

Cranium

coronal suture  
lambdoidal suture  
squamous suture

**frontal bone** – frontal sinus

**L parietal bone**

**L temporal bone** - external acoustic meatus, mandibular fossa, mastoid process, styloid process, zygomatic process & zygomatic arch

**occipital bone** – foramen magnum, occipital condyles

**sphenoid bone** - greater wings, lesser wings, optic canal, sella turcica, sphenoid sinus

**ethmoid bone** – crista galli, cribriform plate

Facial bones

**mandible** – condylar head, mental foramen, mandibular foramen

**maxilla** – palatine process

**L palatine bone**

**L zygomatic bone**

**L lacrimal bone**

**L nasal bone**

**vomer**

**L inferior nasal concha**