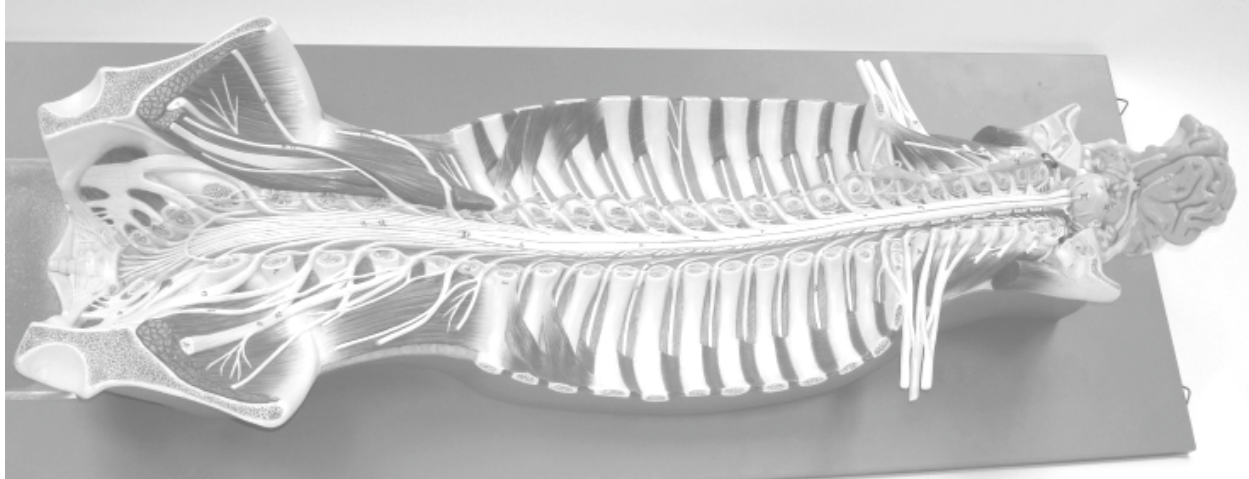


What you need to ID – Rack O’Nervous System Model

This sheet tells you what you need to be able to identify on this model – check the “to know” sheet for anything else you may need to know about this topic.



You are *done* with this model when you can identify *all* of the following structures:

- spinal cord
- 3 brachial plexus
- 15 cauda equina
- E cervical enlargement
- 2 cervical plexus
- 14 conus medullaris
- 7 dorsal roots
- 9 dorsal root ganglia
- e femoral nerve
- f genitofemoral nerve
- gray ramus communicans
- b ilioinguinal nerve
- g intercostal nerves
- 18 lumbar enlargement
- 13 lumbar plexus
- phrenic nerve
- 6 anterior median fissure
- 16 sacral plexus
- I sciatic nerve
- B spinal nerve
- 21 sympathetic chain ganglia
- 7 ventral root
- white ramus communicans