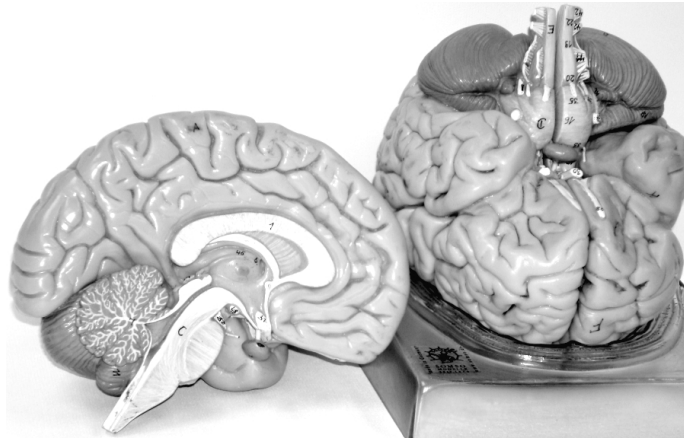


What you need to ID sheet – Midsagittal Brain Model – 2 part model

This sheet tells you what you need to be able to identify on this model – check the “to know” sheet for anything else you may need to know about this topic.



You are **done** with this model when you can identify **all** of the following structures: (4 part brain models in lab also show cerebral cortex, white matter tracts and insula)

- | | |
|---------------------------------------------------|------------------------------------------------|
| 35 abducens nerve (CN VI) | 6/n interventricular foramen |
| 40 accessory nerve (CN XI) | longitudinal fissure |
| h anterior commissure | m mamillary body |
| e aqueduct of midbrain
(= cerebral aqueduct) | E medulla oblongata |
| c/7 arbor vitae | C midbrain |
| brain stem | I occipital lobe |
| central canal (of spinal cord) | 32 oculomotor nerve (CN III) |
| A cerebellar cortex | 28 olfactory nerve (CN I) |
| cerebellar hemispheres (L & R) | 31 optic chiasm (= optic chiasma) |
| B cerebellum | 30 optic nerve (CN II) |
| cerebrum/cerebral hemispheres (L & R) | G parietal lobe |
| choroid plexus (blue structure) | pineal gland (pink structure over
thalamus) |
| i corpora quadrigemina | 46 pituitary gland |
| o corpus callosum | D pons |
| diencephalon | r septum pellucidum |
| 36 facial nerve (CN VII) | spinal cord |
| folia/fissures | i superior colliculus |
| l fornix | H temporal lobe |
| 18/d fourth ventricle | 45 thalamus |
| F frontal lobe | g third ventricle |
| 38 glossopharyngeal nerve (CN IX) | transverse fissure |
| gyrus (-i)/sulcus (-i) | 34 trigeminal nerve (CN V) |
| 41 hypoglossal nerve (CN XII) | 33 trochlear nerve (CN IV) |
| g hypothalamus | 39 Vagus nerve (CN X) |
| i inferior colliculus | 37 vestibulocochlear nerve (CN VIII) |
| infundibulum (stalk to pituitary) | vermis |
| interthalamic adhesion (brown dot on
thalamus) | |