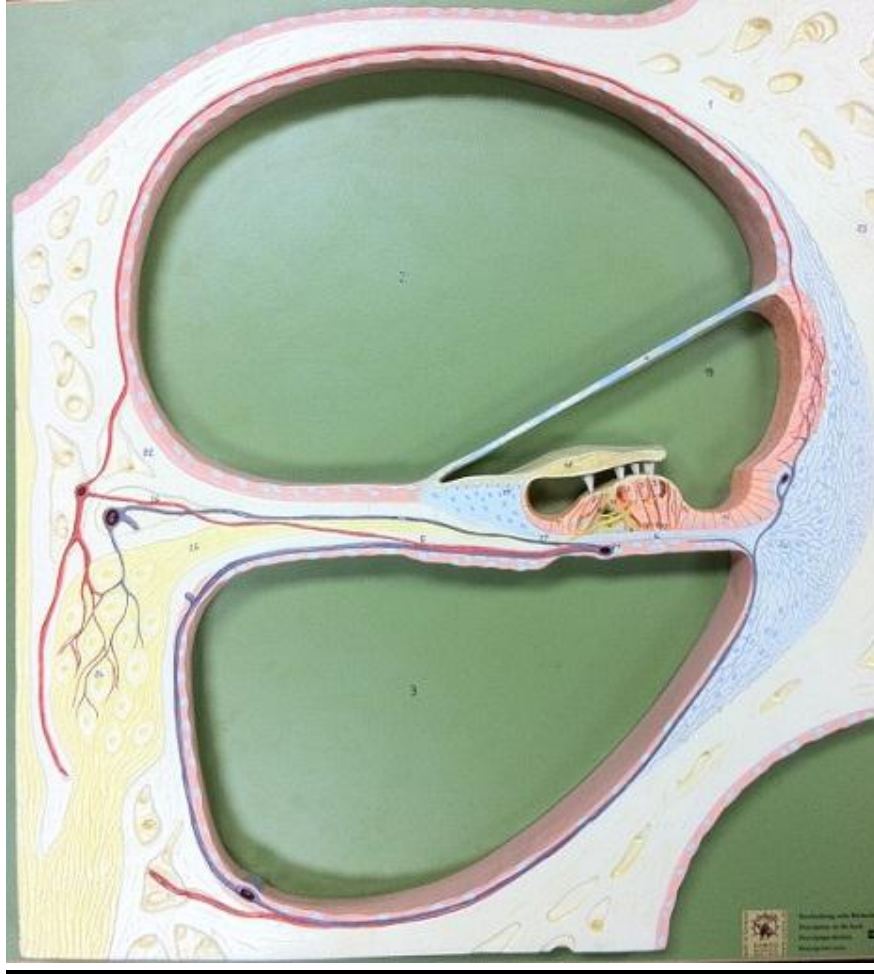


Cochlea Cross-section Key



- 2. Scala Vestibuli
- 3. Scala Tympani
- 4. Vestibular Membrane
- 6. Basilar Membrane
- 8,9. Hair cells with stereocilia
- 18. Tectorial Membrane
- 19. Cochlear Duct (a.k.a. Scala Media)
- 24. Spiral Ganglion