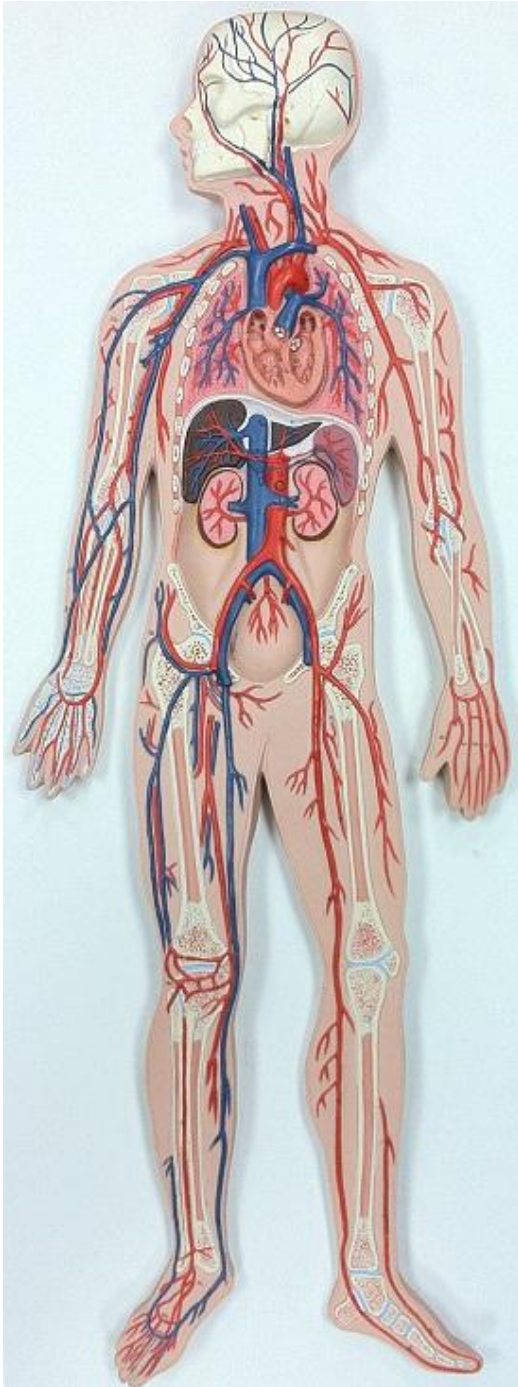


Vein Man KEY



- 2. Superficial Temporal Vein
- 7. Left External Carotid Artery / Facial Vein
- 10. Internal Jugular Vein
- 16. Right Subclavian Artery/Vein
- 17. Superior Vena Cava
- 18. Common Carotid Artery
- 18a. Internal Carotid Artery
- 21. Axillary Artery/Vein
- 22. Cephalic Vein
- 24. Brachial Artery/Vein
- 26. Left Subclavian Artery
- 27. Basilic Vein
- 29. Ulnar Artery/Vein
- 31,33. Radial Artery/Vein
- 41. Deep Palmar Arch
- 48. Pulmonary Trunk
- 64. Renal Artery/Vein
- 65. Celiac Trunk
- 72. Left Common Iliac Artery/Vein
- 73. Left External Iliac Artery/Vein
- 75. Right Internal Iliac Artery/Vein
- 78. Femoral Artery
- 81. Fibular Artery
- 82,106. Anterior Tibial Artery
- 89. Femoral Vein